

# Administration of Medicines & Supporting Pupils with Medical Conditions Policy



## Contents

1. Introduction .....	3
2. Scope and Publication .....	3
3. Aims .....	3
4. Personnel.....	4
5. Responsibilities.....	4
6. Liaising with Parents .....	5
7. Individual Health Care Plans (IHCPs) .....	6
8. Asthma Care Plans .....	7
9. Severe Allergy Plans .....	8
10. Information about Pupils with Medical Needs.....	9
11. Training.....	9
12. Insurance .....	10
13. Medical Records and Consent.....	10
14. Prescription Medication and School Paracetamol.....	10
15. Self-Medication.....	10
16. Administration of Medication.....	11
17. Storage of Medication .....	12
18. Safe Disposal of Medicines and Medical Equipment.....	12
19. Emergency Procedures .....	13
20. Off-Site Visits and Sporting Events .....	13
21. Absence due to Long Term Health Needs .....	13
22. Unacceptable Practice .....	14
23. Complaints .....	15
24. Safeguarding.....	15
25. Staff Medicines .....	15
26. Review .....	15
Appendix 1: Model Process for Developing Individual Health Care Plans .....	16
Appendix 2: Checklist when Receiving Medicines.....	17
Appendix 3: Individual Healthcare Plan (IHCP) .....	19
Appendix 4: Agreement for School to Administer Medicines (& Record) .....	24
Appendix 5a: My Asthma Care Plan .....	26
Appendix 5b: My Asthma Care Plan Record of Medication for Child with Asthma Plan (Where Staff Help with Administering).....	28
Appendix 6: Staff Training Record: Administration of Medicines.....	29

Appendix 7: Administering Medicines Training Record for Staff.....	30
Appendix 8: Model Asthma/Severe Allergic Reaction Register.....	31
Appendix 9: What to do if a Child is Having an Asthma Attack.....	32
Appendix 10: Contacting Emergency Services.....	33
Appendix 11: Template Letter Inviting Parents to Contribute to Individual Healthcare Plan Development.....	34
Appendix 12: Recognition and Management of an Allergic Reaction/Anaphylaxis.....	35
Appendix 13: Auto Adrenaline Injector (AAI) Kit Contents.....	36
Appendix 14: Model Monitoring Record of Support for Pupils/Students with Medical Needs.....	37
Appendix 15: CALPOL Guidelines from Manufacturer.....	38
Appendix 16: Administrating School Paracetamol.....	40
Appendix 17: Crofton Infants School Paracetamol administration checklist.....	42
Document Detail.....	43
Version Control.....	43

## 1. Introduction

This is a template policy provided for all Waterton Academy schools by Waterton Academy Trust.

It is now possible for school to hold emergency inhalers and auto-adrenaline injectors for use with pupils/students who have been diagnosed with the conditions treated by such devices and where parental consent has been gained to use the school devices in an emergency situation. Department of Health advice is that if schools choose to hold this emergency equipment, then it is helpful to have an Asthma Policy, such as that provided by the Trust.

### **Department of Health Guidance documents that give greater detail in specific areas:**

Guidance on the use of adrenaline auto-injectors in schools (September 2017)

Guidance on the use of emergency salbutamol inhalers in school (March 2015)

### **To be read in conjunction with:**

- Supporting pupils at school with medical conditions, Statutory guidance (December 2015, updated August 2017)
- Separate guidance document; Supporting pupils with medical conditions: links to other useful resources) updated August 2017
- Attendance Policy
- SEND Policy
- First Aid Policy
- Health and Safety Policy
- Education Visits Policy
- Children who cannot attend school because of medical needs
- Additional resources include Health Conditions in Schools Alliance:  
[www.medicalconditionsatschool.org.uk](http://www.medicalconditionsatschool.org.uk)

Be aware that individual medical conditions guidance may have been updated to reflect the impact of Coronavirus: Covid-19; if uncertain contact Public Health England (PHE) and/or local infection control teams

## 2. Scope and Publication

This policy applies to all pupils, parents and staff at Crofton Infants School

Copies of the policy are available on request, in large print or other accessible formats if required.

This policy should be read in conjunction with the school's Health and Safety Policy.

## 3. Aims

Waterton Academy Trust is committed to ensuring that all pupils with medical conditions, both physical and mental health, can access and enjoy the same opportunities at the school as any other pupil and to ensuring that they are able to play a full and active role in school life, remain healthy and achieve their academic potential.

The Head of SEND and Inclusion will monitor that the school implements and maintains an effective management system for the administration of medicines to all pupils in our care in order to ensure that the school provides support to individual pupils with medical needs.

## 4. Personnel

At Appendix 1 is an accessibility audit relating to the above three planning duty areas which we have completed prior to completing the Accessibility Plan.

The person responsible for leading on supporting pupils with managing medicines in school is called:

Title: Executive Head

Name: Clare Holloway

## 5. Responsibilities

### Trust

The Trust is responsible for:

- Fulfilling the statutory duty to support pupils with medical conditions
- Ensuring that policies, plans, procedures and systems in place are properly and effectively implemented. (This monitoring role is the responsibility of the Head of SEND and Inclusion)
- Ensuring that the school is covered by the Department for Education's Risk Protection Arrangement (RPA) or the equivalent level of insurance.

### Headteacher

The Headteacher is responsible for:

- Clearly identifying the roles and responsibilities for those involved in the supporting pupils with medical conditions
- Ensuring that sufficient numbers of staff are suitably trained and able to access all relevant information and teaching support materials required to assist pupils with medical conditions
- Ensuring that sufficient numbers of trained staff are available to support pupils' medical needs at all times whilst they are under the care of the school, including making contingency plans for staff absence and emergency situations
- Ensuring that information regarding an individual pupil's medical condition is shared with appropriate staff (including supply teachers where appropriate) on a need-to-know basis
- Ensuring that risk assessments take into account the additional risks posed to individual pupils as a result of their medical conditions.

### Medicines Lead

The Medicines Lead is responsible for:

- Training frontline admin/office staff to understand the systems and processes in school for receiving medicines, completing forms or signposting parents to the person who leads on managing medicines. (Appendix 2 provides an overview for this)

- Ensuring that IHCPs are completed for relevant pupils/students and that they are updated annually.
- Monitoring that medication is being administered according to any agreements recorded.
- Monitoring that records of medication administered are being completed in line with policy.
- Ensuring that pupils/students additional medical needs are being met to the highest standards both on the premises and off (whilst on educational visits and activities).
- Ensuring they are familiar with this policy and all the appendices including the consent forms and plans.
- Ensuring that the school has two emergency asthma inhalers and two emergency auto-adrenaline injectors which are in date at all times and that they are stored in line with school procedures.
- Ensuring that all staff, including supply and agency staff, and volunteers working with their class know which children might require emergency medication (i.e. inhalers or auto-immune injectors) and where this can be found.
- Ensuring that a child who has had a prolonged absence from school due to a long-term health need is receiving the additional support required to help them readjust and access learning.
- Risk-assessing the procedures for administering medicines in the school.

### **Staff**

Staff are responsible for:

- Ensuring that pupils receive any support or medication stated in their plans/agreements at the times and according to the dose stated.
- Ensuring that all staff, including supply and agency staff, and volunteers holding this information are aware of the need for confidentiality.
- Ensuring that any concerns are shared with the person responsible for Supporting pupils with medical conditions.
- Recording all doses of medication administered.

In the case of schools with EYFS

- Reporting, in writing, to parents that medication has been administered.

## **6. Liaising with Parents**

The school promotes on-going communication with parents in order to ensure that the specific medical needs of all pupils in our care are known and met.

Parents must inform the Headteacher/Medicines Lead if their child has or develops a medical condition and, where appropriate, provide the school with appropriate medical evidence and/or advice relating to their child's medical condition.

Where appropriate, parents will be invited to consult with the school and relevant healthcare professionals in order to produce an IHCP for their child. A template letter to parents can be found in Appendix 11.

Parents should also inform the Headteacher/Medicines Lead if their child will require prescription or non-prescription medication to be taken over a specified period of time at the school, and of any changes to the medication required.

The school requests that medication is only taken at the school if it is essential, i.e. where it would be detrimental to the pupil's health not to administer the medication during the school day.

To this end, medicines should generally be taken at home, before and after the school day where possible. The school will therefore only administer medicine if it is prescribed as four times a day or more. Any variance to this will be at the discretion of the Headteacher.

Where pupils require medication for pain relief (i.e. Calpol, Paracetamol, etc.) for a specific medical or health issue, that has been prescribed, parents need to bring this to the school office and complete an 'Agreement for School to Administer Medicines' form (Appendix 4). School will administer this in line with the manufacturer's guidelines, including the timeframes advised i.e. not administering it for more than a 24-hour period (except at the direct discretion of the Headteacher/Medicines Lead). School will need to know the time when the last dose was given at home in order to agree to give subsequent doses.

Unless otherwise stated in an IHCP or similar plan, the medicine will need to be brought in each morning and collected each afternoon. This will allow for communication between parents and school about the doses that have been administered, both at home and at school.

Prescription medicines will only be administered at school:

- when it would be detrimental to a child's health or school attendance not to do so and
- when we have parent's written consent.

Staff at the school will not administer any medication to a pupil without obtaining prior written permission from his or her parents. This requirement will not prevent a child of sufficient understanding and intelligence to understand fully what is proposed, from giving or withholding consent to medical treatment or from seeking advice or treatment in confidence.

Unless in exceptional circumstances, no pupil under the age of 16 will be given prescription medication without parental consent.

#### **[EYFS only]**

Staff will ensure that parents are informed in writing on each and every occasion that any medication was administered, and for any reason medication has not been administered parents will be informed and will be given an explanation.

## **7. Individual Health Care Plans (IHCPs)**

The school will focus on the on the needs of each individual pupil and how their medical condition impacts of their school life, including how the medical condition impacts on a pupil's ability to learn and will take steps to help increase pupils' confidence and ability to self-care.

Where a pupil has long-term or complex medical condition or health needs, the school will, where appropriate, produce an IHCP for that pupil, in accordance with Appendix 1. A template IHCP is set out in Appendix 3.

The IHCP will be prepared following consultation with the parents, the pupil (where appropriate) and school nurse and/or any other relevant healthcare professional. Where there are healthcare professionals leading on the long-term treatment for the pupil, they should be responsible for writing the IHCP as they hold the relevant expertise, i.e. where a child has an asthma care nurse, or the GP has prescribed emergency medicine for severe allergies. The school holds no such expertise.

Where appropriate, the IHCP should be linked with a pupil's statement of Special Educational Needs or Disability (SEND) and/or Education, Health and Care Plan (EHCP). Where a pupil has special educational need, but does not have a statement or EHCP, their special educational need should be mentioned in their IHCP.

The IHCP will be presented to the parents for approval prior to its implementation to ensure the school holds accurate information about the medical condition of any pupil with long-term needs.

Once the IHCP is approved the Headteacher/Medicine Lead will be responsible for its maintenance and implementation.

The IHCP will be reviewed at least annually or more frequently where a pupil's needs change.

## 8. Asthma Care Plans

Where a child is suffering from Asthma and has been prescribed an inhaler, there will be a meeting between the Medicine Lead and the parents to complete an Asthma Care Plan (as opposed to an IHCP). Asthma Plans are completed annually as it is recognised that this condition and the relevant medication can change over time. The information collected (See Appendix 5) includes identifying potential triggers, treatment, emergency contacts and what to do in an emergency.

This documentation will be held on the school management system as well as in the First Aid Room and in a named wallet alongside the child's inhaler in the classroom.

Where the pupil/student self-administers the inhaler, there is no requirement for the school to record the dose – although they might choose to do so. Where the dose is administered, this will be recorded by the trained member of staff assisting.

The school keeps an Asthma register which is kept updated regularly. It is posted in the First Aid Room and the Staff Room to assist identification of pupils who may require emergency support (see Appendix 8).

The school also displays, alongside the above, a flowchart for helping children who need emergency support for their asthma (see Appendix 9).

Where the school chooses to hold emergency use inhalers, please refer to our Asthma Policy. This outlines how we store and use them.

See also:

DoH Guidance on the use of emergency Salbutamol inhalers in school (March 2015)

## 9. Severe Allergy Plans

Pupils who suffer from severe allergies and have been prescribed an auto-adrenaline injector (AAI) require a Severe Allergy Plan. This needs to be completed by a healthcare professional and then shared with the school.

All school staff involved in supporting this pupil are trained by the healthcare professional in the correct use of the AAI and the procedures required to deal with an emergency situation.

A register of these pupils and their photos are displayed in the First Aid/Staff Room along with their Severe Allergy Plan (under data protection criteria) and the procedures for recognising and managing anaphylaxis. (Appendix 12)

AAIs will not be administered to anyone unless they have been prescribed this medication and have written permission from their parents for its use (for anyone under the age of 16).

**If someone appears to be having a severe allergic reaction (anaphylaxis), you MUST call 999 without delay, even if they have already used their own AAI device or a spare one.**

In the event of a possible severe reaction in a pupil who does not meet these criteria, emergency services (999) should be contacted, and advice sought from them as to whether administration of the spare AAI is appropriate (see Appendix 10).

In the case where emergency services are required, those dealing with the incident should clearly pass this message onto office staff, who will call for the ambulance straight away, and then inform leadership. The ambulance should be called before parents are contacted. A **designated first aider** should remain with the child until the ambulance arrives.

In the case that a child needs to be assessed at a hospital then parents should be contacted immediately. If the child's contacts cannot be reached, then a member of the leadership team and a first aider should transport the child to hospital. Office staff should continue to attempt to contact family members.

The incident needs to be recorded according to the Health and Safety Policy and the Incident Matrix needs to be followed.

Our school holds emergency use auto adrenaline injectors (AAIs) for use when the pupil's own AAI fails or is not available. We use these only on pupils who have a diagnosis of severe allergic reactions/anaphylaxis and where we have parental consent to use these. These are sourced from our local pharmacy via a letter from the Headteacher on the school letterhead.

These emergency AAIs are held in the First Aid Room/Main Office, known to all staff. See Appendix 13 for the AAI kit contents.

See also:

DoH Guidance on the use of auto-injectors in school (September 2017).

## 10. Information about Pupils with Medical Needs

Any information (IHCPs/Asthma Plans/Severe Allergy Plans etc.) about any of our pupils who require additional support for health and wellbeing is stored on the school's secure management system and updated regularly (as condition or medicines change) as well as annually. Any information is dated in order to ensure that current details are followed.

Photo boards of pupils/students with medical conditions will be displayed in the First Aid Room/Staff Room for easy identification of emergency needs.

All IHCPs and plans are stored near to the medication required in order that the doses given are recorded immediately the medication is given.

All such documentation is stored with good data protection practice in mind.

## 11. Training

The school will ensure that there are members of staff who are appropriately trained to manage medicine as part of their duties. Staff must not give medication or undertake healthcare procedures without appropriate training. As a result, all staff will receive training in school procedures for supporting pupils with medical needs as part of safeguarding children.

The Headteacher is responsible for the administration of medicine and the arrangements for pupils with medical conditions within the school. He/she will delegate duties as appropriate to other named members of staff who have received appropriate training.

The Headteacher will ensure that all staff are supervised where appropriate. Any staff responsible for the administration of medicine will have access to pupils' IHCPs.

Relevant members of staff will receive appropriate training and support from the school nurse and/or a qualified health professional, including training on the side effects of medication and what to do if they occur. If the administration of medication involves technical, medical or other specialist knowledge, appropriate individual training tailored to the individual pupil will be provided to appropriate staff by the school nurse and/or a qualified health professional, where appropriate.

The school nurse and/or qualified health professional will provide written confirmation that the member of staff is proficient in the procedure which is set out in Appendix 6.

Staff **must not** give prescription medicines or undertake health care procedures without appropriate training. For the avoidance of doubt, a first aid certificate **does not** constitute appropriate training in supporting pupils with medical conditions.

The school engages the following health professionals to train and assist school staff in dealing with medical conditions and administering medicine:

### School nursing

All staff will be made aware of the terms of this policy and the school's arrangements for supporting pupils with medical conditions and their role in implementing the terms of this policy.

All new starters will be made aware of the terms of this policy during their induction.

## 12. Insurance

Crofton Infants School will ensure that there is adequate insurance in place which appropriately reflects the level of risk at the school. The Trust maintains records of the RPAs for the school. This can be checked with the Head of Procurement and ICT at the Trust.

All staff who are required to administer medicines or to provide support to pupils with medical conditions are covered by the school's liability insurance. A copy of the relevant insurance policy is available to all staff on request.

## 13. Medical Records and Consent

Parents of all pupils at the school are required to complete the relevant parental agreement to administer medicine before medication is administered to their child. The document they sign will be dependent on the needs of the child and the types of support required.

Where school staff administer medicines in accordance with a medical plan or written agreement with parents (i.e. Appendix 4), all doses given will be recorded and countersigned by a witness.

Staff administering medicines will sign the relevant records: Appendix 4 for short term medicines or at the back of the IHCP or Asthma plan, whichever is relevant to the case, each time a medicine is administered. Written records of all medication administered to every pupil are retained by the Headteacher/Medicines Lead and relevant records can be provided, subject always to the law on data protection, to parents on request. These records are regularly reviewed by the Headteacher/Medicines Lead.

## 14. Prescription Medication and School Paracetamol

As a general rule, staff will not administer any medication that has not been prescribed for that particular pupil by a doctor, dentist, nurse or pharmacist.

In support of working together to manage attendance, it is recommended that Waterton Academy Trust Schools keep their own stock of Paracetamol suspension. Paracetamol must be stored securely as all other medicines are stored and must not be stored in first aid boxes.

Crofton Infants School must ensure that parents/carers have first provided written consent for the school to occasionally and appropriately provide Paracetamol suspension to their child. School paracetamol must be administered in line with: Appendix 16 Adminstrating School Paracetamol.

When a child is given medicine there must be a written record using: Appendix 17 Crofton Infant School Paracetamol administration checklist

## 15. Self-Medication

The school recognises that pupils should be allowed to carry their own medicines and relevant devices (such as inhalers) according to their age, maturity and the impact/effects of the medication on others, wherever possible, or should be able to access their medicines for self-medication quickly and easily. This will be agreed upon in the IHCP or Asthma Plan.

Following consultation between the school, parents and the pupil, a pupil will be permitted to store and carry their own medication if in the opinion of the Headteacher/Medicines Lead they are sufficiently competent to do so. This will be reflected in a pupil's IHCP.

The school will also consider the safety of other children and medical advice from the prescriber in respect of the pupil in reaching this decision. There is no requirement for staff to record doses of inhalers that have been self-administered but school may choose to record this information for monitoring purposes.

Pupils will be made aware the medication is strictly for their own personal use and it should not be passed to any other pupils under any circumstances, and to do so is a breach of school rules.

Schools to state their agreed criteria for pupils/students carrying medicines here.

## 16. Administration of Medication

Where a pupil requires supervision to take their medication or where such medication will be administered by staff, pupils receiving medication should be made aware of when and where they should attend at the prescribed times during the course of the medication to receive their treatment.

School arrangements for how this takes place should be recorded here: e.g. The child will attend/be accompanied to the Office by a Teaching Assistant.

All medicines supplied to the school by parents must be provided in the original container as dispensed by the pharmacist and include the prescriber's instructions for administration.

**Before** providing the medicine to the pupils, staff administering medication will check:

- the pupil's full name
- the name of the medication
- the name of the child on the label
- the prescribed dose
- the expiry dates
- the method of administration
- the time/frequency of administration
- any side effects
- the written instructions on the container
- when any previous dose was given

In order to avoid any errors, the name and the dose will be checked by another member of staff and the record of the dose countersigned by them.

If staff are in any doubt over the procedure, including where a child might be sick after taking medication, to be followed, the parents will be contacted before action is taken.

If a pupil refuses their medication, Staff will record this and report to parents as soon as possible.

No member of staff will administer more than the stated dose in the time period stated for any reason. (This **does not** include the emergency use of inhalers or auto-adrenaline injectors for those with IHCPs for these medical conditions).

## 17. Storage of Medication

Medicines are always securely stored in accordance with individual product instructions.

The school will carry out a risk assessment to consider any risks to the health and safety of the school community and put in place measures to ensure that identified risks are managed and that medicines are stored safely.

Non-emergency medicines will be stored in a locked cupboard with the key readily available at all times, not easily accessible by pupils.

Where such medicines need refrigeration, the medicine will be put in a sealed plastic container, particularly necessary if the fridge also contains food.

All medicines shall be stored in the original container in which they were dispensed, together with the prescriber's instructions for administration.

Medicines other than inhalers, unless otherwise specified in an IHCP, will be kept in the main school office/Staff Room/Medicine Room/First Aid room.

Emergency medication such as inhalers, adrenaline pens and blood glucose testing meters will be kept in the pupil's classroom in a clearly marked container/bag in order to be easily accessible. They will not be locked away to ensure quick access in emergency. In order to ensure safety of classmates and avoid misuse of equipment, staff will instruct the whole class about the equipment, why it is vital to the pupil, where it is kept and how they need act.

Pupils who do not carry and administer their own medication understand which members of staff will administer their medication.

Schools with EYFS need to state where the medicine is kept and the procedures for accessing it.

If a pupil is prescribed a controlled drug, unless otherwise agreed as part of an IHCP, it will be kept in safe custody in a locked, non-portable container and only named staff and the pupil will have access. A record of any doses used, and the amount of the controlled drug held at the school will be maintained.

Those pupils who are permitted to possess a controlled drug will be advised that it is an offence to pass the drug to any other person for use.

Parents should collect all long-term medicines belonging to their child at the end of each term and are responsible for ensuring that any date-expired medication is collected from the school.

## 18. Safe Disposal of Medicines and Medical Equipment

Medicines which are out of date will be returned to the parents for them to dispose of/returned to our local pharmacy with whom we have an agreement.

Sharps/needles etc. are disposed of in the Sharps bins provided by the local health authority on diagnosis of the pupil/student. Disposal of the sharps bins are through the free local authority refuse arrangements.

## 19. Emergency Procedures

In the event of an emergency related to the administration of medicine, the Headteacher/Medicines Lead should be called as soon as possible, if not already present. If he/she does not consider that he or she is able to deal with the presenting condition, then they should continue any first aid or medical procedures being provided whilst another person summons emergency medical care. This does not, however, affect the ability of any person to contact the emergency services in the event of a medical emergency. Staff should always dial 999 for the emergency services in the event of a serious medical emergency before implementing the terms of this policy and make clear arrangements for liaison with the ambulance services on the school site.

All action taken should reflect the details outlined and agreed in the pupil's/student's IHCP if one is in place. A checklist for contacting the emergency services can be found in Appendix 10.

## 20. Off-Site Visits and Sporting Events

The school actively supports all pupils with medical conditions to access and enjoy the same opportunities at the school as any other pupil, which includes ensuring that they are able to take an active role in school trips and sporting activities, unless it is contraindicated by a medical professional involved in a pupil's care (such as his or her GP).

If a pupil attending an off-site visit or sporting event cannot self-medicate, they will be accompanied by a member of staff who has received appropriate training to administer the medication in accordance with this policy. Any treatment or action required will be documented in the Risk Assessment for the visit.

All pupils requiring preventative medicine (particularly for sport), if sufficiently competent to self-medicate, are responsible for carrying their medication with them. If not sufficiently competent, a member of staff shall carry the medication, individually labelled, along with the written agreement/plan. All doses administered by staff will be recorded on the plan/record.

Secure storage for medicines will be available at all short-term accommodation used by the school.

(See Educational Visits Policy).

## 21. Absence due to Long Term Health Needs

It is our intention that every pupil/student on our role has the offer of good quality education. Where the education of a pupil/student is interrupted as a result of being unable to attend school for a period of time due to health needs, we will work with the Local Authority and Health Care Practitioners/Hospital to ensure that the pupil/student's individual needs, including social and emotional, are met.

This applies to children who cannot attend school at all or can only attend intermittently.

The school will contact the LA as soon as it becomes clear that the child will be away from school for 15 days (30 sessions) or more consecutively or cumulatively.

The school will liaise with the Local Authority, as soon as the need becomes apparent, with a view to deciding the best course of action or provision.

The school will:

- Appoint a Lead contact to maintain regular communication with the child, the LA and the parents/carers
- Liaise with external teaching support in order to minimise the effect of the absence on the child's attainment and ensure effective reintegration through contributing to the education plan
- Ensure that any alternative education providers used will have the appropriate safe recruitment checks in place
- Maintain the child on role during this period
- Contribute to an individually tailored reintegration plan

(See guidance document: "Ensuring a good education for children who cannot attend school because of health needs" Statutory guidance for local authorities January 2013 for more details).

## 22. Unacceptable Practice

Staff should use their discretion and training with regard to each individual pupil's medical needs, by reference to their IHCP and/or EHCP, as appropriate.

However, staff should be aware that the following practices are generally unacceptable:

- Preventing access to medication and relevant devices (such as inhalers), where this is reasonably required.
- Preventing the administration of agreed medication.
- Assuming all pupils with the same conditions require the same treatment.
- Ignoring the views of the pupil or their parents; or ignore medical evidence or opinion (although this may be challenged).
- Frequently sending pupils with medical conditions home or preventing them from taking part in normal school activities unless this is provided for in their IHCP/EHCP or by their medical advisors.
- Sending unwell pupils unaccompanied to the school office or medical room.
- Penalising pupils for their attendance record, if their absences are related to their medical condition (e.g. hospital appointments).
- Preventing pupils from drinking, eating or taking toilet or other breaks when required to enable them to manage their medical condition effectively.
- Requiring parents, or otherwise making them feel obliged, to attend the school to administer medication or otherwise provide medical support to their child during the school day.
- Preventing pupils from participating in or creating unnecessary barriers to children participating in all aspects of school life, including school trips.

## 23. Complaints

If parents or pupils are dissatisfied with the medical support provided at the school, they should raise these in the first instance with the Headteacher.

If the Headteacher cannot resolve the issue, then a formal complaint can be raised via the school's complaints procedure.

## 24. Safeguarding

Where there are any concerns about a child's wellbeing, including frequent use of medication, staff will speak with the Designated Safeguarding Lead or their Deputy about such concerns. (Refer to the Child Protection Policy and Safeguarding Policy for procedures).

## 25. Staff Medicines

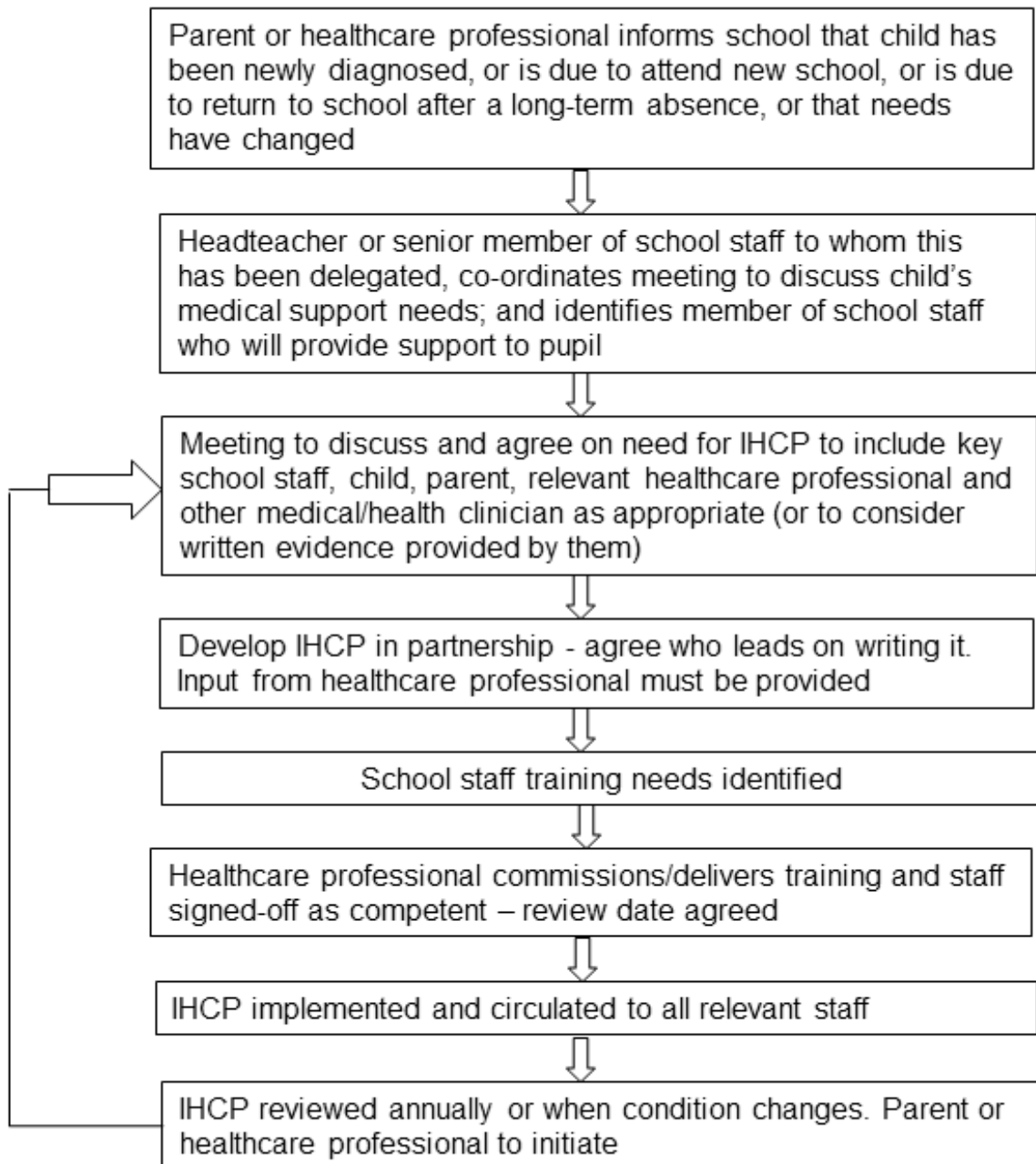
Where staff are taking medication for their own medical conditions, these will be stored securely, locked away, and out of reach of children. We are aware of the serious implications of children accessing medicines not prescribed for them. The arrangements for this school are that staff will keep all personal medication in the staff room (not accessible to children) and will only bring such medication that is necessary for the working day.

If staff are taking medication which may affect their ability to care for children, they must seek medical attention and speak with their line manager.

## 26. Review

This policy will be reviewed by the Trust every two years and its procedures will be reviewed and updated by the Headteacher on an annual basis.

## Appendix 1: Model Process for Developing Individual Health Care Plans



## Appendix 2: Checklist when Receiving Medicines

All such documentation is stored with good data protection practice in mind

1	Is this a fourth dose? If YES go to Q3. If NO go to Q2
2	If not, why does it need administering in school?
3	Has it been prescribed by a doctor, dentist, nurse or pharmacist? If YES go to Q4. If NO go to Q5
4	Is it in the original packaging? ** Does it have the Pharmacist's name, address, telephone number and logo? (If no logo, phone the pharmacy – do not administer.) <sup>1</sup>
5	Does it have the child's name and date of birth stated clearly on the packaging (and contents – if a bottle)?
6	Does the content match the container in name and dose size? (i.e. 200mg Paracetamol not 500mg).
7	Is it in date?
8	Where does it need to be stored?
9	Who brought the medicine in to school?
10	Who will be collecting the medicine at the end of the day? (Not the child)
11	Has an administering medicines consent form or an IHCP been completed?

**\*\* Note if Insulin, this may not be in the original container but might be in the form of pen or pump**

Type of Permission / Medical Record to Complete	Long-Term Medicines	Short-Term Medicines	Asthma Plan	Allergies
	Appendix 3 IHCP	Appendix 4 Agreement for school to administer medicines/record	Appendix 5 Asthma Care Plan	1. Specific allergy treatment plan 2. Generic allergy plan i.e. not severe
Who Completes it	SENCO – if linked to SEN Health Care Professional involved Another designated member of SLT	Parent	Parent with class teacher	1. Health Care professionals (who train relevant school staff to administer required medicine) 2. Parents with school Appendix 4 or IHCP depending on need
Types of Illnesses / Medication	Epilepsy Diabetes Cystic Fibrosis	Pain Fever Antibiotics	Asthma – use of inhalers	Allergies to food, animals etc.

	Chronic Fatigue Arthritis Coeliac Disease			
--	---	--	--	--

## Appendix 3: Individual Healthcare Plan (IHCP)

Crofton Infants School

<b>Child's name</b>	
<b>Photo*</b> <b>*If parents give consent</b>	
<b>Class/Form</b>	
<b>Date of birth</b>	
<b>Age</b>	
<b>Medical diagnosis or condition</b>	
<b>Date of plan</b>	
<b>Date of plan review</b>	

Family contact information: FIRST contact	
<b>Full name</b>	
<b>Relationship to child</b>	
<b>Phone number (work)</b>	
<b>Home</b>	
<b>Mobile</b>	
<b>Address, if different to child</b>	

Family contact information: SECOND contact	
<b>Full name</b>	
<b>Relationship to child</b>	
<b>Phone number (work)</b>	
<b>Home</b>	
<b>Mobile</b>	
<b>Address, if different to child</b>	

Clinic/Hospital Contact/Pharmacy	
Name	
Role	
Contact Number	

GP	
Name	
Surgery/Practice	
Contact Number	

School	
Who is responsible for providing support in school?	
What are the expectations of the role? (Even if the child is self-administering)	
Who will cover this role if they are absent?	

Medical Needs	
What are the medical needs?	
What are the symptoms experienced by the child?	
What are the signs that can be seen that are an indication of the child being unwell?	
What can trigger an incident?	
Is treatment required?	
If so, what treatments are needed?	
What equipment/device is required?	
Where is this stored?	

Medication	
Name of medication	
Dose	
Time the dose is to be taken	
Method of administration (including 'with water' etc.)	
Side effects	
Contraindications (any circumstances in which the	

<b>medicine should not be given)</b>	
<b>What other medication are they on?</b>	
<b>Who is administering the medicine?</b>	

<b>Which other staff have been appropriately trained to administer medicine (in case of absence or on school visits)?</b>	<b>When?</b>
Name	Date
Name	Date
Name	Date

<b>Daily Care requirements (including intimate care/need for food with medicines/need for bloods testing etc.):</b>
<b>Potential risks to staff (including manual handling/blood borne virus etc.):</b>
<b>Specific support for the pupil's educational, social and emotional needs:</b>
<b>Arrangements for school visits/trips (including overnight/residential):</b>
<b>Other information: (Requirements for emergency evacuation/fire drill etc. Is a PEEP and/or an EHCP in place?)</b>
<b>Describe what constitutes an emergency, and the action to take if this occurs.</b>

Who is responsible in a medical emergency?	
On site	
On site	

Who needs to be aware of this plan, the child's condition and the support required? <i>Check appropriate box</i>			
Role	Name	Yes	No
Office/Admin staff		<input type="checkbox"/>	<input type="checkbox"/>
Class teacher		<input type="checkbox"/>	<input type="checkbox"/>
Classroom support		<input type="checkbox"/>	<input type="checkbox"/>
Dinner time support		<input type="checkbox"/>	<input type="checkbox"/>
After school club support		<input type="checkbox"/>	<input type="checkbox"/>
Headteacher		<input type="checkbox"/>	<input type="checkbox"/>
Site manager		<input type="checkbox"/>	<input type="checkbox"/>
Whole teaching staff		<input type="checkbox"/>	<input type="checkbox"/>
Whole school staff		<input type="checkbox"/>	<input type="checkbox"/>
External providers <i>sports coaches/swimming instructors/peripatetic teachers etc.</i>		<input type="checkbox"/>	<input type="checkbox"/>
Supply/cover/PPA cover teachers		<input type="checkbox"/>	<input type="checkbox"/>
EYFS unit staff		<input type="checkbox"/>	<input type="checkbox"/>

Plan developed with <i>tick and name where applicable</i>	
<input type="checkbox"/> <b>Parent</b>	
<input type="checkbox"/> <b>Pupil</b>	
<input type="checkbox"/> <b>School Representative</b>	
<input type="checkbox"/> <b>School Nurse/Health Representative</b>	

**Parental agreement for school to administer medicine (Including self-administration):**

I understand that I must deliver the medicine personally to .....

(Agreed member of staff)

The above information is, to the best of my knowledge, accurate at the time of writing and I give consent to school staff administering/my child self-administering (select as appropriate) medicine in accordance with the school policy and this plan. I will inform the school immediately, in writing, if there is any change in dosage or frequency of the medication or if the medication is stopped.

I agree to the school sharing information appropriately to relevant members of staff (on a need to know and confidentiality basis in line with the school policy).

In the case of diagnosed, severe allergic reactions where the child has already been prescribed an auto adrenaline injector: I give consent for my child to use the school's emergency auto adrenaline pen in a case of emergency.

**Name:** .....

**Signed:** ..... (parent/carer)

**Date:** .....

## Appendix 4: Agreement for School to Administer Medicines (& Record)

Please note that school can only administer medicine if this is a fourth dose. Any other arrangement will be at the discretion of the Headteacher.

Name of Child	
Date of Birth	
Group/Class/Form	

Name and strength of medicine	
Date medicine provided by parent	
Quantity received	
Expiry date	
Dose & time to be taken	
Frequency & duration of administration	
Quantity returned	

**I agree to school contacting emergency services should my child require it.**

Parent name:

Parent signature:

Staff name:

Staff signature:



## Appendix 5a: My Asthma Care Plan

<b>Name of Child</b>	
<b>Class/Form</b>	
<b>Date of Birth/Age</b>	
<b>Type of Medicine (&amp; Expiry Date)</b>	
<b>Date of Plan Review</b>	(Annually)

Family contact information: FIRST contact	
<b>Full name</b>	
<b>Relationship to child</b>	
<b>Phone number (work)</b>	
<b>Home</b>	
<b>Mobile</b>	
<b>Address, if different to child</b>	

Family contact information: SECOND contact	
<b>Full name</b>	
<b>Relationship to child</b>	
<b>Phone number (work)</b>	
<b>Home</b>	
<b>Mobile</b>	
<b>Address, if different to child</b>	

GP/Health Practitioner	
<b>Name</b>	
<b>Surgery/Practice</b>	
<b>Contact Number</b>	

Inhaler Use		
Does your child tell you when he/she needs their inhaler?	Yes <input type="checkbox"/>	No <input type="checkbox"/>
Does your child need help administering their inhaler?	Yes <input type="checkbox"/>	No <input type="checkbox"/>
Does your child need to take their inhaler before exercise or play?	Yes <input type="checkbox"/>	No <input type="checkbox"/>
<b>What signs does your child display when they need their inhaler? <i>Select or add</i></b>		

Waterton Academy Trust, Centre For Excellence, Walton Primary Academy, The Grove, Wakefield, WF2 6LD

☎ 01924 240767 ✉ admin@watertonacademytrust.org 🌐 watertonacademytrust.org

Shortness of breath	<input type="checkbox"/>
Sudden tightness in chest	<input type="checkbox"/>
Wheeze or cough	<input type="checkbox"/>
Other (please state):	<input type="checkbox"/>
<b>What are your child's triggers (things that can make their asthma worse)? <i>Select or add</i></b>	
Pollen	<input type="checkbox"/>
Exercise	<input type="checkbox"/>
Cold/flu	<input type="checkbox"/>
Stress	<input type="checkbox"/>
Weather	<input type="checkbox"/>
Air pollution	<input type="checkbox"/>
Other (please state):	<input type="checkbox"/>

<b>Is your child on any other asthma medication while in school's care? <i>Give details below</i></b>			
Medication	Dose	Frequency	Side Effects

If the above signs occur, please help/allow (delete as appropriate) my child to take the medicine stated above. After treatment and as soon as they feel better, they can return to normal activity.

I confirm that my child has an inhaler and spacer in school, and I will ensure that it is in date.

I consent to my child using the school's emergency reliever inhaler and spacer should it be necessary.

I understand that in an emergency, the school will first contact emergency services and then me.

Signed: .....(parent/carer)

Date: .....



## Appendix 6: Staff Training Record: Administration of Medicines

<b>Name of School</b>	
<b>Name of Staff Member</b>	
<b>Type of Training Received</b>	
<b>Date of Training Completed</b>	
<b>Training Provided by</b>	
<b>Profession and Title</b>	

I confirm that [name of member of staff] has received the training detailed above and is competent to carry out any necessary treatment. I recommend that the training has been updated for [name of member of staff].

Trainer's Signature: .....

Date: .....

I confirm that I have received the training detailed above.

Staff Signature: .....

Date: .....

Suggested Review Date: .....



## Appendix 8: Model Asthma/Severe Allergic Reaction Register

*(Keep separate registers for the above medical needs for ease of identification of pupil/student)*

Asthma register for [academic year]

Photo (Where Possible)	<b>Name:</b>	<b>Asthma plan in place (include date for renewal)</b> Yes <input type="checkbox"/> No <input type="checkbox"/>
	<b>Class:</b>	<b>Parental consent for the use of the emergency inhaler received</b> Yes <input type="checkbox"/> No <input type="checkbox"/>

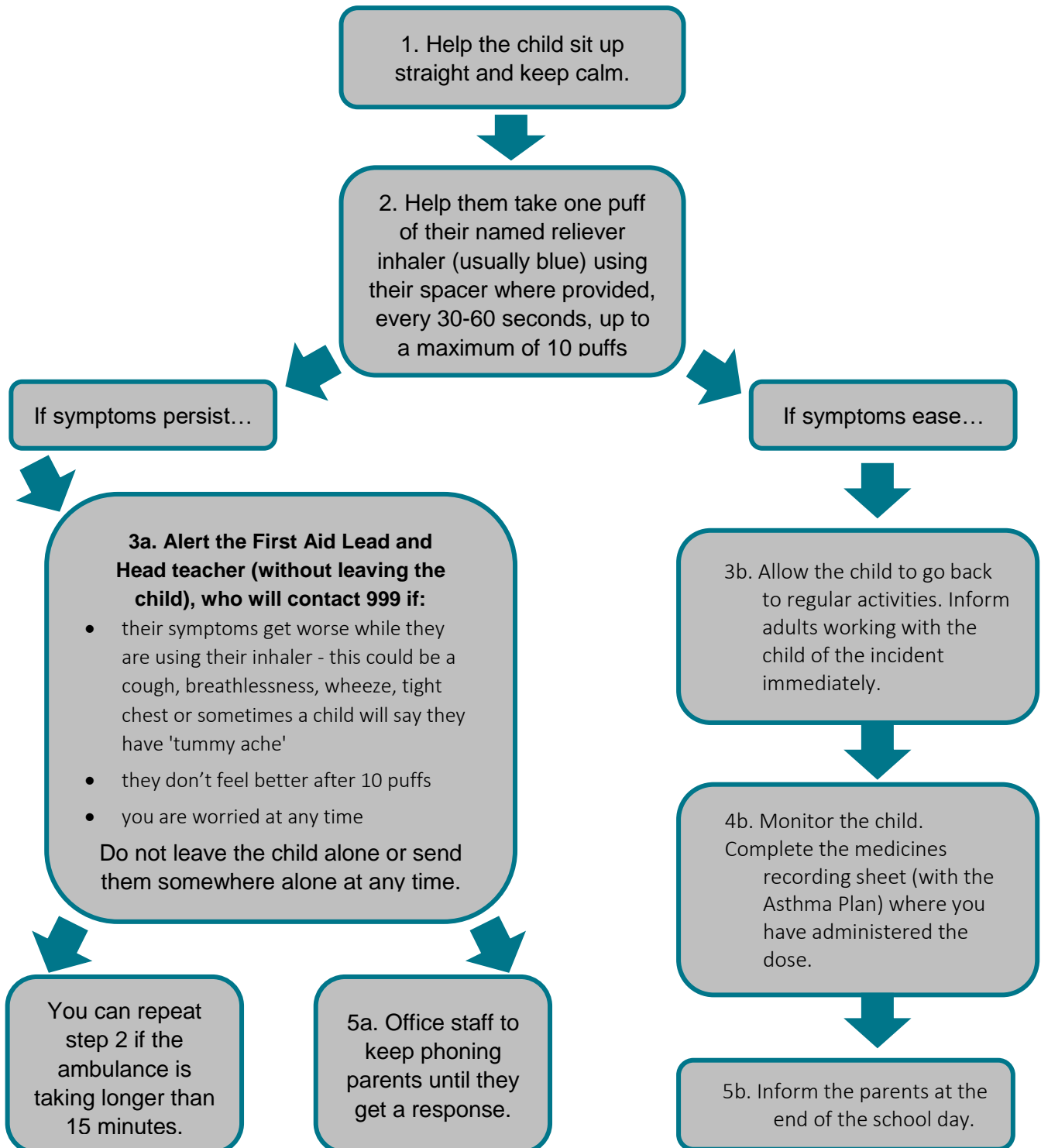
Photo (Where Possible)	<b>Name:</b>	<b>Asthma plan in place (include date for renewal)</b> Yes <input type="checkbox"/> No <input type="checkbox"/>
	<b>Class:</b>	<b>Parental consent for the use of the emergency inhaler received</b> Yes <input type="checkbox"/> No <input type="checkbox"/>

Photo (Where Possible)	<b>Name:</b>	<b>Asthma plan in place (include date for renewal)</b> Yes <input type="checkbox"/> No <input type="checkbox"/>
	<b>Class:</b>	<b>Parental consent for the use of the emergency inhaler received</b> Yes <input type="checkbox"/> No <input type="checkbox"/>

## Appendix 9: What to do if a Child is Having an Asthma Attack

Inhalers are kept in the child's classroom, in a named wallet with the child's Asthma Plan. If the inhaler doesn't work or is empty, then check the plan to see if the child has consent to use the school's emergency inhaler. **(This is kept in the First Aid room in a box labelled EMERGENCY INHALERS.)**

Where consent has been withheld but there is a need to use the emergency inhaler, seek help from the First Aid Lead and Headteacher.



## Appendix 10: Contacting Emergency Services

**Request an ambulance - dial 999, ask for an ambulance and be ready with the information below.**

**Speak clearly and slowly and be ready to repeat information if asked:**

- Your telephone number
- Your name
- Your location as follows [school address]
- State what the postcode is - please note that postcodes for satellite navigation systems may differ from the postal code
- Provide the exact location of the pupil
- Provide the name of the child, age and a brief description of their symptoms
- Inform Ambulance Control of the best entrance to use and state that the crew will be met and taken to the patient
- Put a completed copy of this form by the phone.

Ensure that, where the pupil/student has an IHCP relating to any medical condition (whether related or otherwise to this emergency), is made available to the emergency services upon arrival.

Ensure that, where the pupil/student is on any medication, this information is made available to the emergency services on arrival.

### **Practical points**

- Ensure someone is stationed at the entrance to direct the ambulance crew to the pupil.
- Assign someone to contact, and keep contacting, the parent.
- Assign a senior person/first aider to stay with the child at all times.
- Give the paramedics:
  - a clear concise account of the incident
  - any medication given
  - the time the medication was given
  - the container the medication was in
  - knowledge of any other medications the pupil/student may be on.

## Appendix 11: Template Letter Inviting Parents to Contribute to Individual Healthcare Plan Development

Dear Parent/Carer,

Developing an Individual Health Care Plan for [name of pupil]

Thank you for informing us of [name]'s medical condition. I enclose a copy of the school's policy for supporting pupils at school with medical conditions for your information.

A central requirement of the policy is for an Individual Health Care Plan to be prepared, setting out what support the pupil needs and how this will be provided. Individual Health Care Plans are developed in partnership between the school, parents, pupils, and the relevant healthcare professional who can advise on your child's case. The aim is to ensure that we know how to support your child effectively and to provide clarity about what needs to be done, when and by whom.

Although Individual Health Care Plans are likely to be helpful in the majority of cases, it is possible that not all children will require one. We will need to make judgements about how your child's medical condition impacts on their ability to participate fully in school life, and the level of detail within plans will depend on the complexity of their condition and the degree of support needed.

A meeting to start the process of developing your child's Individual Health Care Plan has been scheduled for [date]. I hope that this is convenient for you and would be grateful if you could confirm whether you are able to attend. The meeting will involve [the following people]. Please let us know if you would like us to invite another medical practitioner, healthcare professional or specialist, and provide any other evidence you would like us to consider at the meeting as soon as possible.

If you are unable to attend, it would be helpful if you could complete the attached Individual Health Care Plan template and return it, together with any relevant evidence, for consideration at the meeting. I [or another member of staff involved in plan development or pupil support] would be happy for you to contact me [them] by email or to speak by phone if this would be helpful.

Yours faithfully,

Name

Position

Crofton Infants School

## Appendix 12: Recognition and Management of an Allergic Reaction/Anaphylaxis

Signs and symptoms include:

### Mild-moderate allergic reaction:

- Swollen lips, face or eyes
- Abdominal pain or vomiting
- Itchy/tingling mouth
- Sudden change in behaviour
- Hives or itchy skin rash

### Action

- Stay with the child, call for help if necessary
- Locate adrenaline autoinjector(s) - always bring AAI to the child not the other way around
- Give antihistamine according to the child's allergy treatment plan
- Phone parent/emergency contact

**Watch for signs of anaphylaxis (below) – life threatening allergic reaction**

Anaphylaxis may occur without initial mild signs: **ALWAYS use adrenaline autoinjector FIRST** in someone with known food allergy who has **SUDDEN BREATHING DIFFICULTY** (persistent cough, hoarse voice, wheeze) – even if no skin symptoms are present.

Airway	Breathing	Consciousness
Persistent cough Hoarse voice Difficulty swallowing Swollen tongue	Difficult or noisy breathing Wheeze or persistent cough	Persistent dizziness Becoming pale or floppy Suddenly sleepy, collapse, unconscious

**If any ONE (or more) of these signs are present:**

- Lie child flat with legs raised: (if breathing is difficult, allow child to sit)
- Use Adrenaline autoinjector\* without delay
- Dial 999 to request ambulance and say ANAPHYLAXIS

**\*\*\* If in doubt, give Adrenaline \*\*\***

### After giving Adrenaline

1. Stay with child until ambulance arrives, do NOT stand child up
2. Commence CPR if there are no signs of life
3. Phone parent/emergency contact
4. If no improvement after 5 minutes, give a further dose of adrenaline using another autoinjector device, if available

Waterton Academy Trust, Centre For Excellence, Walton Primary Academy, The Grove, Wakefield, WF2 6LD

☎ 01924 240767 ✉ admin@watertonacademytrust.org 🌐 watertonacademytrust.org

## Appendix 13: Auto Adrenaline Injector (AAI) Kit Contents

- Two AAls, generally of the make most commonly prescribed in school (i.e. EpiPen or Emerade or Jext)
- Instructions on how to use the device
- Instructions on storage of the device
- Manufacturer's information
- A checklist of the injectors, identified by their batch number and expiry date with monthly check records
- A note of the arrangements for replacing the injectors
- A register to whom the AAI can be administered
- Blank Administration records (which can be attached to their IHCP post the incident)



## Appendix 15: CALPOL Guidelines from Manufacturer

### Dosage for CALPOL Infant Suspension

Age of Child	How Much	How often (in 24 Hours)
2-4 Years	7.5ml (5ml + 2.5ml)	Up to 4 times
4-6 Years	10ml (5ml + 5ml)	Up to 4 times
Do not give more than 4 doses in any 24-hour period		
Leave at least 4 hours between doses		
Do not give this medicine to your child for more than 3 days without speaking to your doctor or pharmacist		

### Calpol-SIXPLUS Suspension usage

It's formulated with over twice the strength of infant paracetamol to provide effective, relief from pain and fever in children aged 6 and over and starts to work on fever in just 15 minutes without being harsh on the tummy.

Age of Child	How Much	How often (in 24 Hours)
6–8 years	5ml	Up to 4 times in 24 hours
8–10 years	7.5ml	Up to 4 times in 24 hours
10–12 years	10ml	Up to 4 times in 24 hours
12–16 years	10-15ml	Up to 4 times in 24 hours
Adults and children over 16 years	10-20ml	Up to 4 times in 24 hours
<b>For all the dosage information above please remember:</b>		
Leave at least 4 hours between doses		
Contains paracetamol – do not use more than one product containing paracetamol at the same time.		
Do not give more than 4 doses in any 24-hour period.		
Do not give this medicine to your child for more than 3 days without speaking to your doctor or pharmacist.		
Shake bottle for at least 10 seconds before use. If using sachet format, massage sachet before use. Always read the label.		

### Calprofen Ibuprofen Solution usage

Our CALPROFEN® starts to work on a fever in just 15 minutes and lasts for up to 8 hours. You can use it as fast-acting pain relief, to reduce your child's temperature and to relieve the symptoms of cold and flu. Each pack contains a measuring spoon.

Age of Child	How Much	How often (in 24 Hours)
3–7 years	5ml	3–4 times a day
8–12 years	10ml	Up to 4 times in 24 hours
<b>For all the dosage information above please remember:</b> If fever doesn't go down, contact your GP.		
<b>For all the dosage information above please remember:</b> Do not give to children weighing less than 5kg.		

Do not give to children aged 6 months and older for more than 3 days.

If symptoms last for more than 24 hours more than 3 days in children over 6 months, seek medical advice.

For further advice, always read the label.

**NB: Medicines are often sold according to the age and the weight of the child. Please check these are appropriate to the child in receipt of the medicine.**

## Appendix 16: Administrating School Paracetamol

It is recommended that Waterton Academy Trust Schools keep their own stock of Paracetamol suspension. Paracetamol must be stored securely as all other medicines are stored and must never be stored in first aid boxes.

**Crofton Infants School** must ensure that parents/carers have first provided written consent for the school to occasionally and appropriately provide Paracetamol suspension to their child.

Before administration the member of staff responsible for giving medicines must always consider whether the child may have been given a dose of paracetamol before school and must check with parents or carers and record on **Appendix 17 Crofton infants School Paracetamol administration checklist**

Many non-prescription remedies contain Paracetamol, if the child has had any pain or cold relief medication in past four hours, Paracetamol must not be given. If Paracetamol is taken soon after taking these remedies, it could cause an unintended overdose. There should be at least four hours between any two doses of Paracetamol containing medicines. No more than four doses of any remedy containing Paracetamol should be taken in any 24 hours.

It is recommended that school should only administer Paracetamol a maximum of three times in a term to an individual child. If a child requests more than this, parents/carers must be advised to seek a medical appointment to review the child's symptoms.

Only one member of staff at any one time should be responsible for administration of medicines, to avoid the risk of giving a double dose. The responsible staff member must be relieved from other duties while preparing or giving the medicine, to reduce the likelihood of error

When a child is given medicine there must be a written record using **Appendix 17 Crofton Infants School Paracetamol administration checklist**

### Before administration of Paracetamol

1. The child is first encouraged to get some fresh air/have a drink/something to eat/take a walk/sit in the shade/lie down (as appropriate) and Paracetamol is only considered if these actions do not work.
2. There must be written parental consent, with verbal consent from the parent or carer on the day.
3. Only standard Paracetamol may be administered. Combination drugs, which contain other drugs besides Paracetamol, must not be administered.

### Administering Paracetamol

1. School must ensure that parents/carers have first authorised the school in writing to provide Paracetamol occasionally to children. Verbal or written consent must also be provided from parents/cares on the day and logged on: Appendix 17 Crofton Infants School Paracetamol administration checklist.
2. Children can only be given one dose of Paracetamol during the school day. If this does not relieve the pain, contact the parent, carer or the emergency contact.
3. The school must provide the parent/carers with a written record of the administration of school paracetamol, this could be copy of: Appendix 17 Crofton Infants School Paracetamol administration checklist
4. The parent/carers and child must be made aware that Paracetamol should only be taken when absolutely necessary; that it is an ingredient in many cold and headache remedies; great care should be taken to avoid overdosing.

5 Waterton Academy Trust, Centre For Excellence, Walton Primary Academy, The Grove, Wakefield, WF2 6LD

☎ 01924 240767 ✉ admin@watertonacademytrust.org 🌐 watertonacademytrust.org

### **When not to administer paracetamol**

Paracetamol must NOT be given:

- Following a head injury
- Where a child is already on some other medication
- Where a child has taken Paracetamol containing medicine within 4 hours

### **Additional notes**

- Paracetamol must be kept in a secure place in line with expectation for all medicines under the medicines policy.
- Aspirin or preparations containing aspirin must never be given to children under 16 years old as its use is associated with Reye's syndrome (a severe neurological disorder).

Dosage – please follow manufacturers' guidance on the bottle/packet of Paracetamol.

Please be aware that if the child looks below average weight for their age, contact the School Nurse for advice before giving Paracetamol.

### **After care**


- After giving the child Paracetamol, accompany the child back to class with a note informing the teacher of the time and dosage given and a request to monitor.
- If the child improves – send a note home in the book bag at home time to inform parents.
- If the child does not improve or gets worse – call parents to collect the child.

## Appendix 17: Crofton Infants School Paracetamol administration checklist

Crofton Infants School Paracetamol administration checklist	
Child's name/Date of birth	
Symptoms	
Does the child have any known illnesses or medical conditions? If yes provide details	Yes/No/details:
Is the child allergic to anything? If yes provide details	Yes/No/details:
Has the child had any medicines today? If yes provide details	Yes/No/details:
Offer fresh air/have a drink/something to eat/take a walk/sit in the shade/lie down (Please circle)	Details
Is this a frequently recurring need? (more than 3 times in a term) If so contact parent/carer?	Yes/No/Action taken
Written consent from parent/carer?	Yes/No
Verbal consent from parent/carer today?	Yes/No
Note sent home informing parents/carers?	Yes/No
Administration recorded in log	Yes/No
Outcome of administration of Paracetamol	Child improved/same/worse (please circle)
Outcome of administration of paracetamol	Child improved/same/worse (please circle)

Staff Name (print)..... Date.....

Staff signature.....

Document Detail			
<b>Document Name:</b>	Administration of Medicines & Supporting Pupils with Medical Conditions Policy		
<b>Version:</b>	2		
<b>Chief Officer Signature:</b>			
<b>Effective From:</b>	01/01/2025		
<b>Approved by:</b>	D Dickinson		
<b>Approval Meeting Reference:</b>	ELT 3/3/25		
<b>Next Review Date:</b>	01/01/2026		
Version Control			
Version	Date	Author	Change/Reference
1	Summer 24	L Thresh	New policy
2	January 24	B Robertson	Administration of Paracetamol and Calpol update