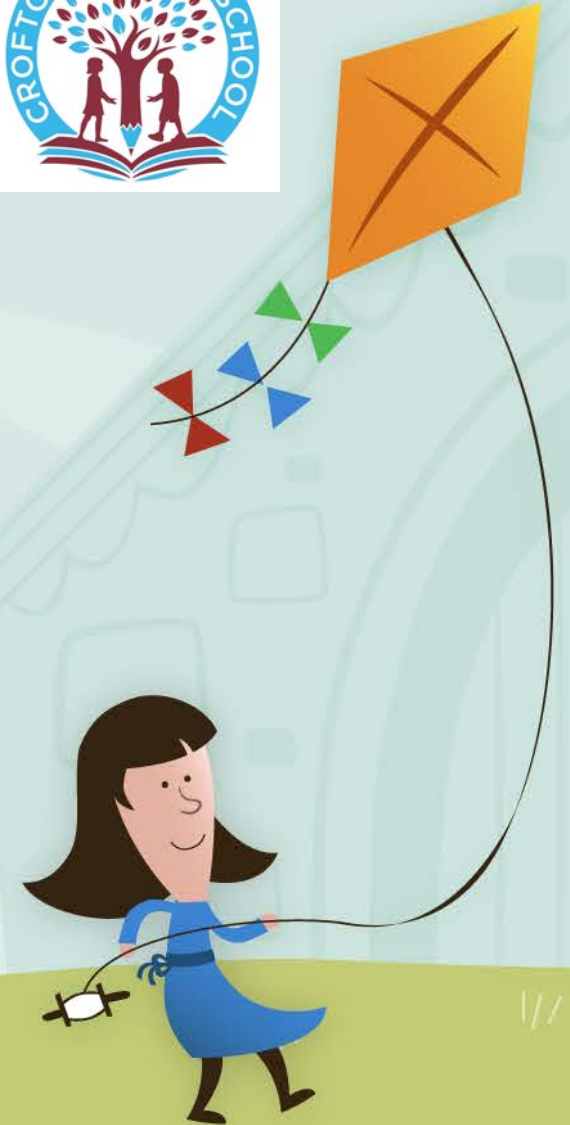


Relationship, and Health Education at Crofton Infants

Key Stage 1



Relationship, and Health Education at Crofton Infants



Relationships Education in primary schools should teach the fundamental building blocks and characteristics of positive relationships, with particular reference to friendships, family relationships, and relationships with other peers and adults



Four main themes

Our bodies

Relationships and family life

Growing up

Keeping safe



What will RHE look like in Key Stage 1



RHE: Key Stage 1



Year 1

- **5-6 year olds:** explores themes around families and their special people, the importance of respecting others including those that are different from us, recognising that genitals are private and their correct names; develops understanding of the difference between surprises and secrets (good or bad secrets) and when not to keep bad adult secrets; helps develop judgement of what kind of physical contact is acceptable or unacceptable and how to respond to this (including who to tell and how to tell them).

Year 2

- **6-7 year-olds:** looks at the process of growing from young to old and how people's needs change; explores the opportunities and responsibilities that increasing independence can bring, recognising that they share a responsibility for keeping themselves and others safe.



RSHE

Extending learning from Reception

Year 1

- **New content includes:**

- Our special people
- Caring behaviour
- Respecting others
- Safe touch
- Unsafe secrets
- Friendship
- Communication
- Bullying
- Boundaries
- Privacy including naming genitals
- Feelings



RSHE

Extending learning from Year 1

Year 2

- How my behaviour (positive or negative) affects others
- Becoming more independent
- Keeping themselves and others safe
- Growing from young to old and how people's needs change



More Information

- We have been trialing SCARF an RSHE education package.
- They provide a range of activities to support parents at home, if you would like to see more I will put the link in the chat
- The draft policy for RSHE is now on the website for parents to view
- Please can you complete the short survey with feedback with regards to the meeting. Thank you.
- <https://www.smartsurvey.co.uk/s/CQQTLZ/>
- <https://www.coramlifeeducation.org.uk/scarf-at-home-keeping-happy-and-healthy-during-lockdown>

